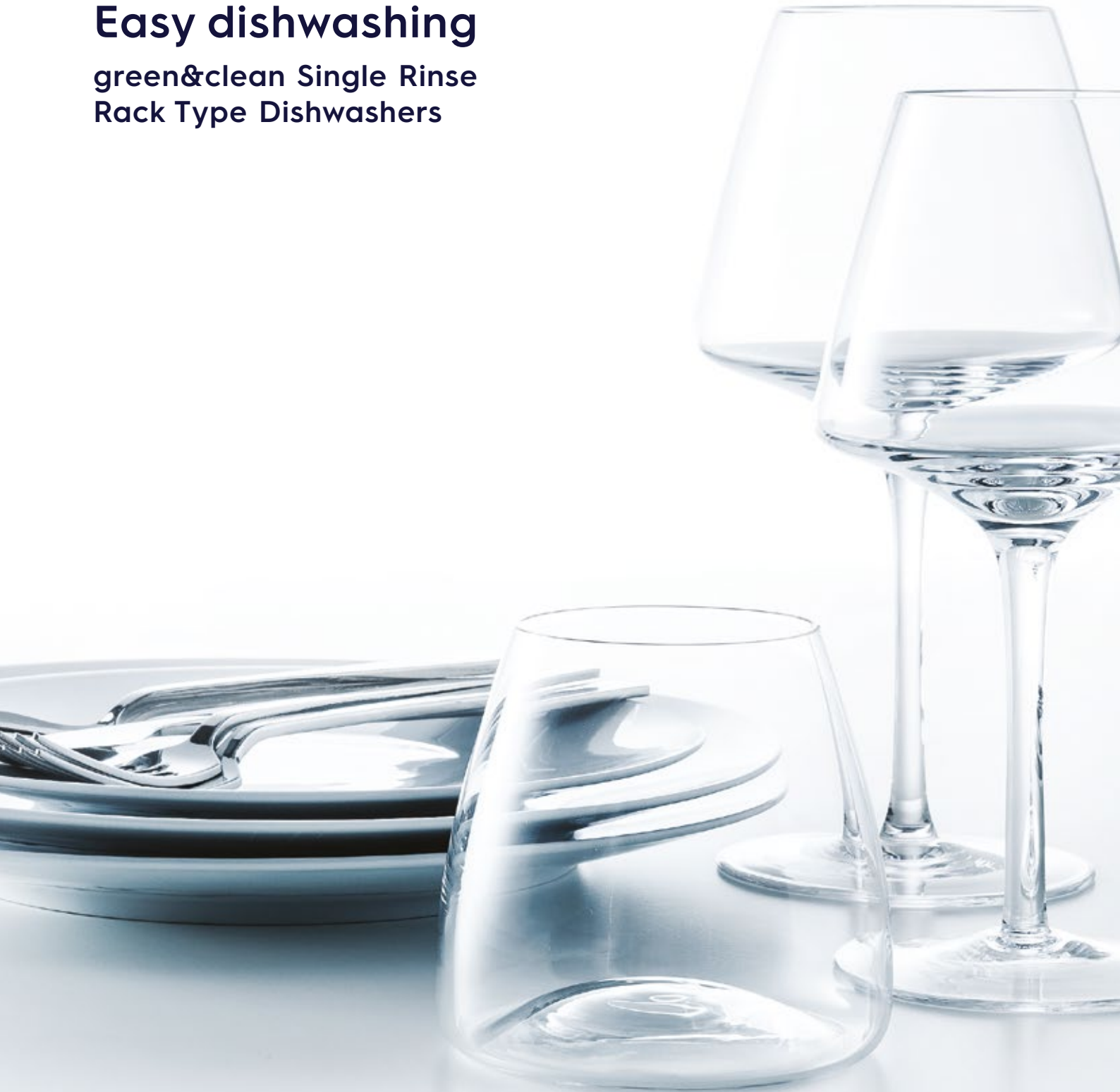




Dishwashing

**Just plain simple.  
Easy dishwashing**  
green&clean Single Rinse  
Rack Type Dishwashers



# You talk...

My ideal rack type dishwasher would be easy to install and easy to use. Reliability is a must, optimizing workflow is essential. Break downs and downtime for complex daily maintenance are frustrating and costly.



# ...we listen

We've designed a smooth and solid reliable solution with access to real time data helping you to maximize and organize your dishwashing area. You will increase your profits by 36% thanks to lower running costs whilst easing daily operations. Eliminate downtime with the unique Non-Stop automatic backup mode that allows the machine to keep washing. **Introducing the new green&clean Single Rinse Rack Type Dishwashers.**



Year after year, Electrolux Professional makes its customers' work-life easier, more profitable and truly sustainable every day.



**Green**

Low running costs



**Clean**

Brilliant washing results



**Safe**

Guaranteed sanitation



**Easy**

Use and maintenance

# Ease of use is everything

The new Electrolux Professional **green&clean Single Rinse Rack Type Dishwasher** guarantees **lowest running costs in its category** and consistent results load after load. The perfect example of sustainability, reliability and ease of use.



**Only 1,5 liters/rack  
in 1,20 m length**

**Save €3.530\*** a year. green&clean's innovative rinse module uses less water, less electricity, less detergent and less rinse aid.

**Energy saving up to 7kWh** with Energy Saving Device (ESD).



**Guaranteed sanitation**

Reach perfect hygiene with 84 °C constant rinse temperature. Guaranteed also with different water inlet conditions.



\* Cost savings are calculated by Electrolux Professional Lab which is accredited by UL and Intertek. Comparison made between green&clean Rack Type Dishwasher and an equivalent conventional machine using 330 liters/hour per rinsing at 10 °C inlet. For a restaurant serving 200 meals/peak hour over 360 days period.

## OnE. Your personal digital ally

OnE App, the new Electrolux Professional advanced web platform, monitors and tracks the total process 24/7 providing you with the right solution to optimize your workflow and your dishwashing area. Plus, remote speed diagnosis reducing any inconvenience for unexpected breakdowns.



### Simple to use

green&clean's touchscreen interface talks to you. Up to 24 languages and a new simple touch panel. Easy to understand technical info and guided troubleshooting for fast fixes.



### Keep washing, no downtime

Keep washing, even if something goes wrong. No more downtime or hand washing whilst your service technician arrives, thanks to the **Non-Stop automatic backup mode**.

### Simple to install

Fast and easy external connections (water, power and chemicals) tried and tested by Electrolux Professional Authorized Service Partner for a faster and safer set-up.



### Crystal clear washing results

Performance guaranteed for any utensils and wares in case of water pressure drop. The wash and rinse is powerful, allowing the water to reach every corner of the rack.



**Only 10 minutes** to take care of your green&clean Single Rinse Rack Type Dishwasher day by day. Scan to watch the video.



# Stronger roots, highest performance



When considering the cost of an investment, the up-front expense is just the tip of the iceberg. Operating costs accumulate, year after year, and make up the largest share of your expense.

**+36%\***  
in profits

Only **1,5 liters/rack in 1,20 m length**, that's all it takes to clean and sanitize an entire rack of dirty dishes with the new green&clean Single Rinse Rack Type Dishwasher. **Save €3.530\*** a year thanks to superior performance combined with savings in water, energy and chemicals.



\* Cost savings are calculated by Electrolux Professional Lab which is accredited by UL and Intertek. Comparison made between green&clean Rack Type Dishwasher and an equivalent conventional machine using 330 liters/hour per rinsing at 10 °C inlet. For a restaurant serving 200 meals/peak hour over 360 days period.



**53%**  
less water\*



**19%**  
less energy\*



**53%**  
less detergent  
and rinse aid\*

# Crystal clear washing performance



Compact & powerful - perfect washing and rinsing results every time.



**Crystal clear washing results** thanks to the wide wash arms consistently blasting high water pressure into every corner of the machine. Sparkling results every time.



**Smooth automatic operation** thanks to an optimum distance between the curtain and rinse arm. In this way the curtains do not block the upper arm, ensuring that the rinse water thoroughly covers the complete rack.

# Safety is peace of mind



No more worries, sanitation is always under control.

**Water pressure guaranteeing a high powered rinse cycle for excellent hygiene**

**Optimum hygiene** thanks to the adjustable pressure valve which stabilizes incoming water pressure to ensure the proper rinsing pressure.





# The simple touch

green&clean's touchscreen interface facilitates your daily tasks. Easy operations, easy installation and simply guided troubleshooting.

Up to **24** languages and a new simple touch panel.

Using green&clean couldn't be easier. Simple graphics guide the user through the quick and easy steps to access different options. **Different users. Different information.**

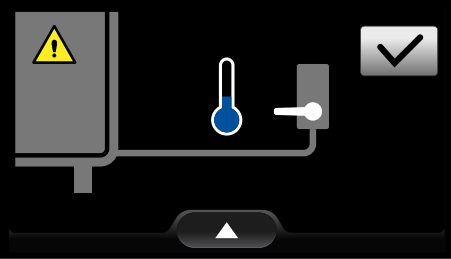


**green&clean's touchscreen interface talks your language.**

- **Operator:** Simple animations and little text make everyday use foolproof.
- **Internal maintenance staff:** Easy to access, easy to understand technical info and protected access with a level 1 password.
- **Electrolux Professional Authorized Service Partners:** Faster troubleshooting at a glance with technical information and protected access with a level 2 password.

## Fast fixes thanks to guided troubleshooting

The machine will show you how to troubleshoot. Service intervention is only requested when strictly necessary.



Open cold water notification





# No more downtime with Non-Stop automatic backup mode

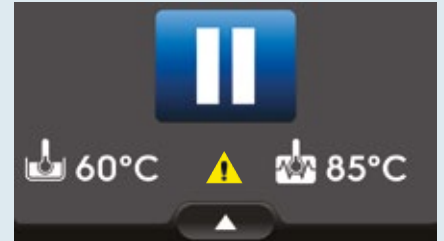
Keep washing, even if something goes wrong. No more downtime or hand washing while waiting for a service engineer.

green&clean Single Rinse Rack Type Dishwashers automatically adopt a different working mode, bypassing faults, to continue washing.

Built-in sensors rapidly identify any issues and activate back-up modes such as altering temperature.



1. When a warning message is notified, push the **CONTINUE** button to activate non-stop automatic backup mode.



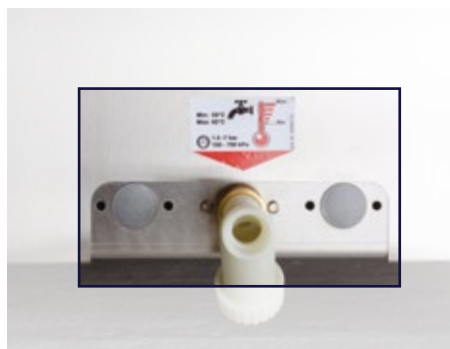
2. Your green&clean Single Rinse Rack Type switches into back up mode to allow you to wash, but the **warning sign** ⚠️ reminds to the operator to ask for a service check.



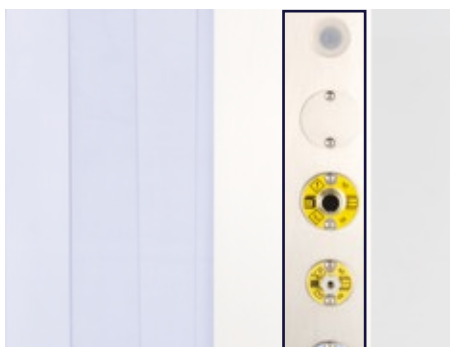
## Easy installation

Fast, easy and fool-proof external connections for a faster and safer set-up with plug-in configuration.

No need to open panels or drill holes.



Water connections



Chemicals connections



Single-point power connection

# Make it to measure

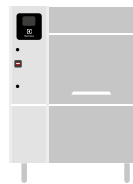
Add various custom options and upgrades whenever you like, even on-site. green&clean Single Rinse Rack Type Dishwasher grows with your business through time.

First select the right combination for your needs:

**100**  
racks/hr

Washes 300 full meal sets in 2 hours.

Wash + Rinse



1120 mm

	Default installed power	Minimum installed power
<b>Single Rinse</b> Hot water connection	<b>25,2 kW</b>	<b>13,2 kW</b>
<b>Single Rinse ESD model</b> Cold water connection	<b>25,5 kW</b>	<b>13,5 kW</b>

Then select the right drying solution:

**No  
Dryer**

No need for extra drying beyond the natural evaporation generated by the hot temperature of the wares.

**No extra space needed.**

**Straight  
Dryer**

Recommended for dishes, fitting straight line set-ups.

Dry



560 mm

**Corner  
Dryer**

Recommended for dishes, saves space thanks to the front or back exit direction.

Dry



872 mm

# Taking care of the details

The entire range of Electrolux Professional Genuine Chemicals is the result of intensive testing in Electrolux Professional laboratories.



## Water softening

Transforms calcium and magnesium ions into non-hardening sodium ions/soluble salts. Rinse aid and detergents achieve good cleaning results with low consumption.

### for ESD models

code 865284 - (cold and hot water)  
Automatic Water Softener

### for non-ESD models

code 865495 - (hot water)  
Automatic Water Softener

---

## Medium and hard water



code 0S2092

### C11 Detergent for Dishwashers

For all water types with best performance indicated for glass, crystal, ceramic, porcelain, plastic and stainless steel.



code 0S2094

### C12 Rinse Aid for Dishwashers

Perfect drying results guaranteed, without manual actions. For all types of water hardness. Indicated for glass, crystal, ceramic and porcelain.

---

## Soft and medium water



code 0S2093

### C13 Eco Detergent for Dishwashers

Eco friendly chemical with low environmental impact  
Concentrated formula without EDTA, NTA and polyphosphates.



code 0S2095

### C14 Rinse Aid Plus for Dishwasher

For all types of water hardness. Indicated for glass, crystal, ceramic and porcelain.

# OnE, the Electrolux advanced web platform

Connected  
green&clean  
Single Rinse Rack  
Type Dishwasher



OnE is the new Electrolux Professional advanced web platform to get top performance from your Electrolux Professional solutions, maximize your revenue and accelerate your return of investment.



## 24/7 monitoring

Zoom into the current status of each green&clean Dishwasher from anywhere at anytime to check washing, rinsing, drying temperatures and at which speed the machine is being used.

**Smart usage.** Use the OnE App to know when your green&clean is on, undersized or oversized so that you can balance the process.

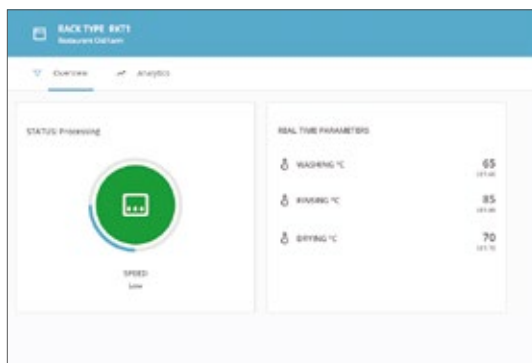


## Maximize profit

Electrolux OnE App helps you reduce consumption to a minimum and optimize the efficiency of your business.

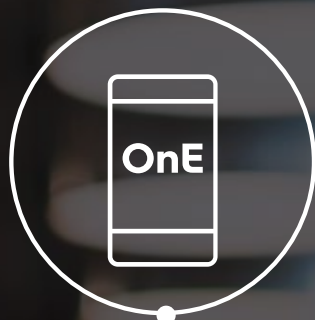
**Smart upgrade of your machine.** Monitoring productivity, you discover you need a pre-wash or a dryer accessory to improve the process. Upgrade as you go along, the green&clean Rack Type grows with your business.

**Smart configuration.** Now you have all the info you need to order your next dishwasher with the capacity right for your business.



OnE App monitors  
your work and helps  
you to create the right  
configuration for your  
dishwashing area.

Digital platform



Physical support



giving you



## Increase equipment uptime

Remote speed diagnosis from anywhere: product code, serial number and any error codes to increase accuracy.

OnE App helps to ensure maximum uptime while reducing any inconvenience for unexpected breakdowns.

For even more benefits subscribe to Essentia Service Agreement.

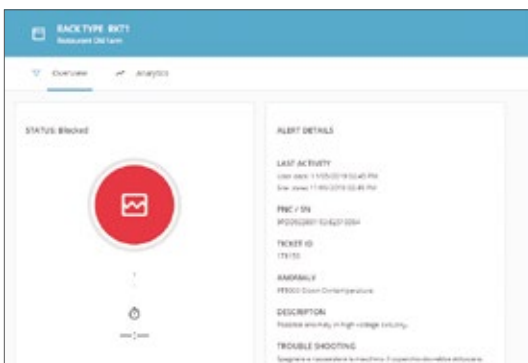


## Optimize your processes

OnE App gives you the insight to **better organize your production flow**.

Monitor the status of your green&clean Dishwasher fleet, also in multiple locations using direct comparison charts in a single snapshot Track actual processing time, operator waiting time and total working time (whether hourly, daily, monthly or yearly).

The outcome will help you to organize your staff and optimize your work flow avoiding dead times.



**Organize your staff, maximize your time. OnE App tracks every aspect to optimize your workflow.**



# The green&clean family

Green, clean, safe and easy with green&clean Dishwashers line.

**40**  
racks/hour



green&clean Undercounter Dishwasher

**80**  
racks/hour



green&clean Hood Type Dishwasher

**100**  
racks/hour



green&clean Single Rinse Rack Type Dishwasher

**150 up to 300**  
racks/hour



green&clean Multi Rinse Rack Type Dishwasher

**Streamline your dishwashing area with handling system**



**18** Pre-wash table options

Available in any length up to 1.6m.



**12** Roller conveyor options

Available in any length up to 2.6m length.



**3** Loading/ unloading table options

Available in any length up to 1.6m.



**44** Sorting table option

Available both manual sorting and automatic sorting for up to 6 racks.



**6** Curve table

Available both in 90° and 180°.

# Essentia Teamed to serve you. Anytime, anywhere



Essentia is **the heart of superior Customer Care**, a dedicated service that ensures your competitive advantage. Provides you with the support you need and takes care of your processes with a **reliable service network**, a range of tailor-made exclusive services and innovative technology.

You can count on more than **2,200 authorized service partners**, **10,000 service engineers** in more than **149 countries**, and over **170,000 managed spare parts**.

## Service network, always available

We stand ready and committed to support you with a **unique service network** that makes **your work-life easier**.

## Service agreements, you can trust

You can choose from **flexible tailor-made service packages**, according to your business needs, offering a variety of maintenance and support services.

## Keep your equipment performing

Undertaking correct maintenance in **accordance with Electrolux Professional Manuals** and recommendations is essential to avoid unexpected issues. **Electrolux Professional Customer Care** offers a number of **tailor-made service packages**. For more information contact your preferred Electrolux Professional **Authorized Service Partner**.



Watch  
the video  
and find out  
more!





Experience the Excellence  
[professional.electrolux.com](http://professional.electrolux.com)

Follow us on



## Excellence with the environment in mind

- ▶ All our factories are ISO 14001-certified
- ▶ All our solutions are designed for low consumption of water, energy, detergents and harmful emissions
- ▶ In recent years over 70% of our product features have been updated with the environmental needs of our customers in mind
- ▶ Our technology is RoHS and REACH compliant and over 95% recyclable
- ▶ Our products are 100% quality tested by experts

